

**"ONE OF THE MOST IMPORTANT AND INTERESTING GENRE FILM  
FESTIVALS IN THE UK" - JOHN TOWNSEND, HORROR ASYLUM**

---

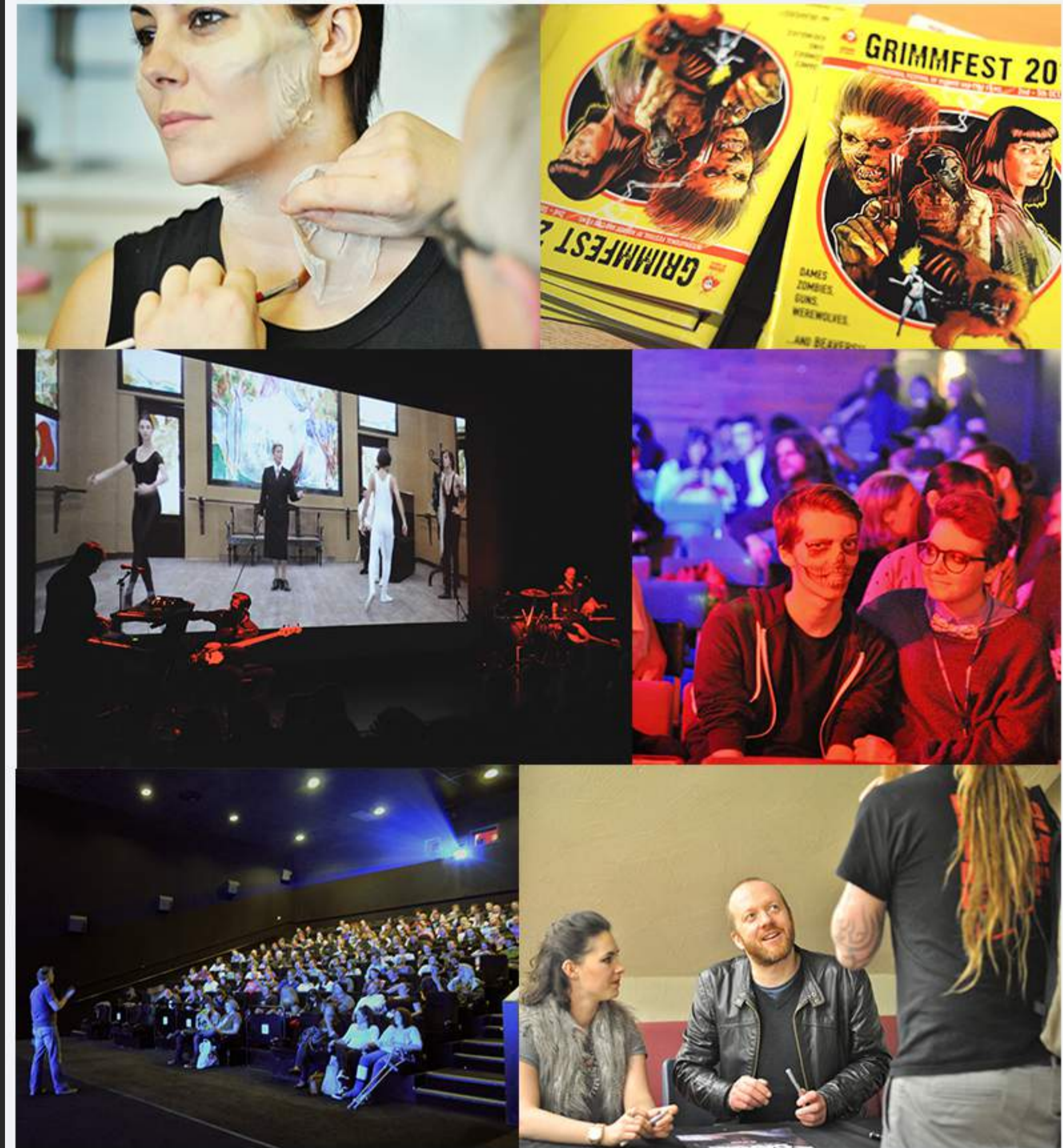
# **GRIMMFEST**

**ONE OF THE UK'S LEADING FILM FESTIVALS OF SCI-FI, HORROR AND FANTASY...**

# WHO ARE WE?.. WE ARE GRIMMFEST!

We are one of the largest genre film festivals in the UK outside of the capital; listed as one of the top 40 genre film festivals in the world. We specialise in screening the very best in brand new Sci-fi, Horror and Fantasy movies from around the globe. Our fans come out in their masses for 4 days of exclusive premieres, special meet and greets with movie stars and Directors, and special stalls around the festival.

Through the annual film festival and our screening events through the year in Manchester our audience has grown over six years to over 15,000; and with our new partnership with Odeon in The Printworks, Manchester for this years festival we expect to welcome audiences of 2500+ over 1-4th October 2015.



- PREVIOUS GUESTS INCLUDE ● LIAM CUNNINGHAM (GAME OF THRONES) ● CLAUDIO SIMONETTI'S GOBLIN ● STEVE DRAM (SIGHTSEERS) ● ROSS NOBLE (QI) ● MARTIN KEMP (SPANAU BALLET) ● STARS OF EMMERDALE PATRICK MOWER & DOMINIC BRUNT ● ROBIN HARDY (THE WICKER MAN) ● POLLYANNA MCINTOSH (FILTH) ● REECE SHEARSMITH (THE LEAGUE OF GENTLEMEN) ● MATTHEW HOLNESS (GARTH MARENCHI'S DARKPLACE) ● ALICE LOWE (HORRIBLE HISTORIES ● SIGHTSEERS) ● SHAUN EVANS (ENDEAVOUR, BOY A) ● MYANNA BURING (RIPPER STREET, THE DECENT, KILL LIST) ● THE CAST OF CLIVE BARKER'S HELLRAISER ●

**"A FANTASTIC OPPORTUNITY TO EXAMINE THE ENTRAILS OF THE FILM INDUSTRY AND LEARN DIRECTLY FROM THE INNOVATORS AND MOGULS CONSTANTLY BREATHING NEW LIFE INTO THE GENRE."  
RACHEL WINTERBOTTOM – MANCHESTER CONFIDENTIAL**

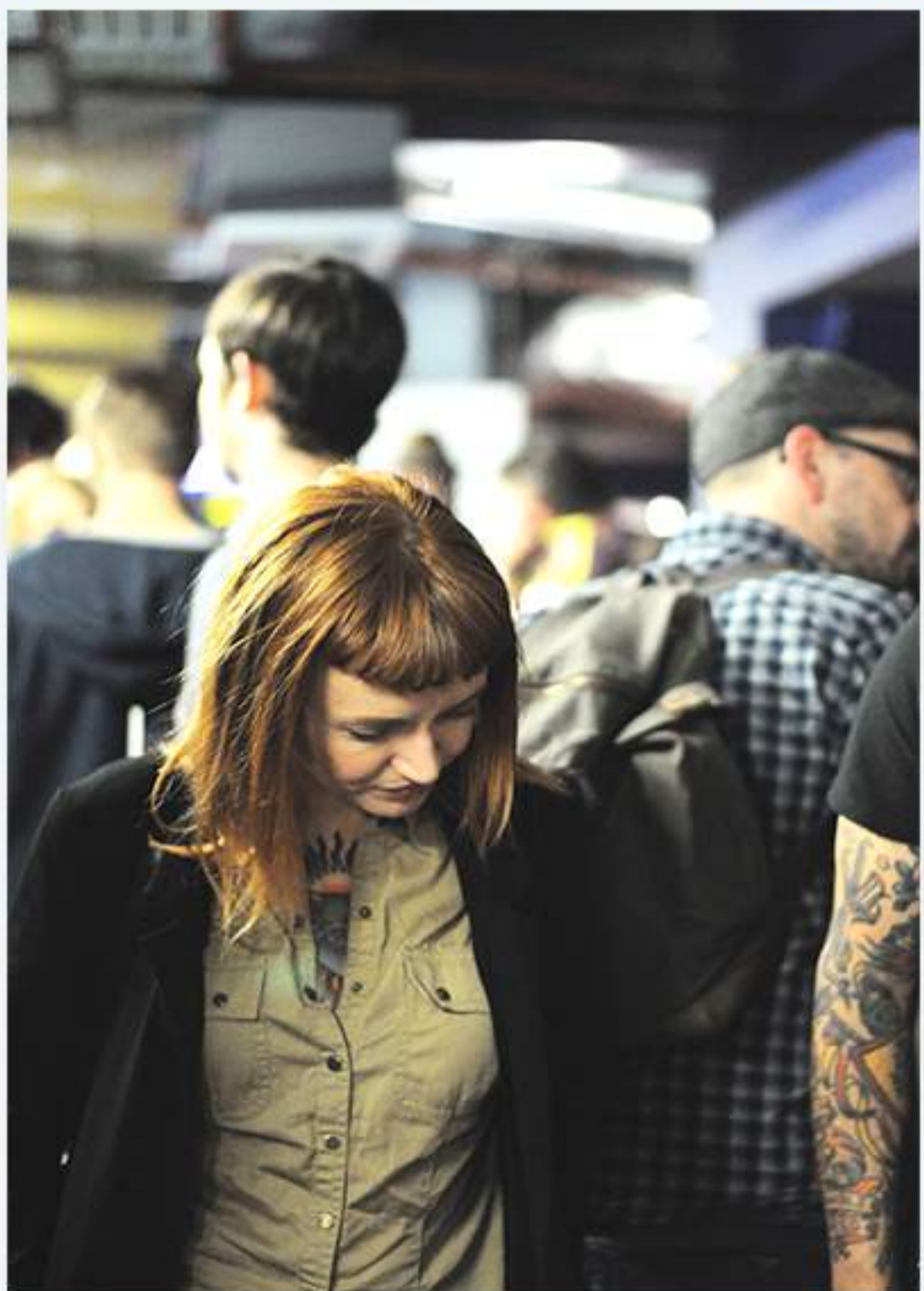


# WHERE ARE WE?..

---



AFTER MULTIPLE SELL-OUT COLLABORATIONS on screenings such as *The Babadook*, *Nightmare on Elm Street* and *Serenity*, we are very proud to extend our relationship with Odeon to host our entire festival at the impressive flagship 20 screen cinema, in **Manchester's** central hub of entertainment, **The Printworks**.



This move into our new venue brings with it the highest quality of digital projection on the mammoth 29x68ft screen, our brand new festival hub which is located between screens 1-7, the toilets and Europe's 2nd largest **IMAX** screen. The most important addition to **Grimmfest**, that comes with Odeon, is the merging of our Audiences. We are very excited at the prospect of combining our network of 15k+ with Odeon & The Printworks footfall of over **8 million** people per year.

# WHO LOVES US?..

2009-2015 in numbers



7000+ LIKES



5500+ FOLLOWERS



2000+ SUBSCRIBERS

ATTENDEE'S **7000+**

FILM SUBMISSIONS **500+**

OFFICIAL SELECTION FILMS SCREENED **200+**

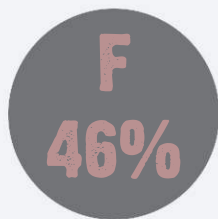
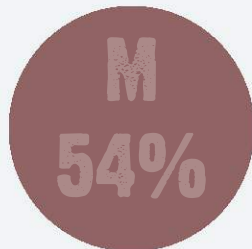
SPECIAL GUESTS **72**

YEAR ROUND SCREENING EVENTS **50**

FESTIVAL EDITIONS **7**

# 2014 DEMOGRAPHIC..

GENDER



AGE RANGE

18-20 **23%**

20-45 **65%**

45-64 **6%**

65+ **6%**

# WHO LOVES US..

"A unique weekend and one Manchester and Grimm should be proud of. It's extremely DIY, reeking of independence and spreading awareness of what they believe in, there's a real inclusive, family feel to proceedings." - Jamie Groovement

"There's something for every fright-fanatic" - Simon Bland, The Skinny.

"A cracking selection of films on offer for festival goers to feast on." - Jon Dickinson - Horror Asylum



# SPONSORSHIP OPPORTUNITIES..

## Master Sponsorship Package —

We have a few limited packages that will get you all of the below, 4 VIP weekend passes for your brand to do with as you please and a guest list for select screenings throughout the festival. If you think Grimmfest and your brand are a perfect match then this is essential.

## Official Festival Programme —

What better way to promote your brand than to take out space in our official festival programme! There will be over 2000 printed and distributed throughout Odeon, The Printworks and key Cafe's, Bars, Venue's and Shop's throughout the central and Greater Manchester area!

## Official Poster —

Grimmfest prides itself on having some of the best damn festival poster artwork out there. Sponsor our poster and have your logo on there! Due to the cult nature of our posters they will be shared to thousands of people online, featured in national press and distributed throughout Manchester.

## On Screen Space —

The light of the big screen is the whole reason our audiences attend Grimmfest. Sponsor our screen to have your branding on Odeon's huge 29ft x 68ft screen throughout the entire festival or even better, play a thirty second ad before the movies start!

## Website —

Audiences will come in droves to check out the very best new independent genre movies that are screening at our festival, get your logo linked through to your website alongside these listings!

## Lanyards —

Our Lanyards will be the festival goers first pick up upon arrival. Required for all festival events these are the perfect for your product's placement as people take pictures with our celebrity guests throughout the weekend and share on social media.

## Festival Hub and Signage —

There will be signage for Grimmfest throughout The Printworks and the 20 screen Odeon Multiplex in addition to a highly concentrated festival hub which is located outside the IMAX cinema and 7 of Odeon's screens. What better way to promote your brand that to have your logo spread throughout one of the countries best genre festivals in one of Odeon's flagship cinemas in front of thousands of cinema go-ers.

## Stalls —

Want to go one step further and bring your products to our punters at the festival hub? Get in touch for details on stalls and exhibition space at the central of our festival.



# PREVIOUS SPONSORS..

---



SEC~~OND~~ND SIGHT



Hilton



JURYS  
INN

STUDIOCANAL



For more information please contact [GREG@GRIMMFEST.COM](mailto:GREG@GRIMMFEST.COM)